

**PAR
EXPRESS**



Established 2000

WINTER 2011

Pocono Animal Rescue, Inc.
P.O. Box 582 • Bartonsville, PA 18321
Phone: 570-476-1464 • Fax: 570-424-8384
Web: www.poconoanimalrescue.org
501(C)3 Non-Profit Org.

PAR NEEDS YOU !!!



We are in desperate need of donations and contributions for the animals we have at our rescue facility. We have 4 horses that need to be adopted into loving homes.

Please remember that we are a non-profit organization, relying solely on donations and the kindness of a small group of volunteers. Our volunteers work tirelessly to care for our rescued animals. These animals are dependent on us to care for them, so please don't let them down. Without your help and support, many of these animals would perish.

Pocono Animal Rescue needs help from the public!! Please call us if you see Abuse or Neglect of any large domestic farm animals.

GREETINGS FROM THE PRESIDENT

2010 has been a busy year for Pocono Animal Rescue. THANK YOU to all our sponsors and local businesses for helping the animals in our care. Cruelty officers have been busy all year investigating calls, preparing court cases and caring for surrendered and confiscated animals in fulfillment of PAR's mission. Cow, sheep, horses and potbellied pigs are living better lives because of your support of PAR.

In 2011, we are looking forward to finding adoptive homes for the four horses that remain in our care as well as caring for the welfare of all large animals in the Pocono region.

PAR won the cattle case against Leonard Manhart in October 2010 in the court of Common Pleas. The cattle have gotten a second chance with new loving homes today.

Make sure you visit our web site, www.poconoanimalrescueinc.org, for up-coming events and fundraisers for 2011.

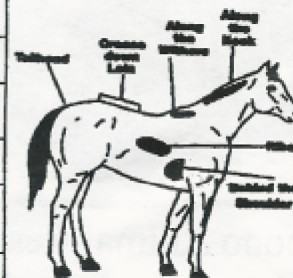
Determining the Henneke Score

This is a repeat from our last issue due to importance of recognizing horses who may need help.

The Henneke scoring method was developed by Dr. Don Henneke and is used to rate the body fat deposition in various places on a horse's body. The method uses a scale with a range from 1 (extremely emaciated) to 9 (extremely fat). The accepted "norm" score on the Henneke scale for a horse is 5. The numbered scale replaces previous methods that used vague terms such as Good, Poor, Fair or Bad. The numbered scale described in the table below provides a uniform method of scoring the condition of horses across all breeds. This is a much fairer result than an individual's interpretation of the health of a horse using vague terms.

CONDITION	NECK	WITHERS	LOIN	TAILHEAD	RIBS	SHOULDER
1 POOR	Bone structure easily visible	Bone structure easily visible	Spinous Processes Project Prominently	Tailhead (pinbones) And hook bones Projecting prominently	Ribs projecting prominently	Bone structure easily noticeable
2 VERY THIN	Faintly discernible	Faintly discernible	Slight fat covering over bases of spinous processes. Transverse processes of lumbar vertebrae feel rounded. Spinous processes are prominent.	Tailhead prominent	Ribs prominent	Faintly discernible
3 THIN	Neck accentuated	Withers accentuated	Fat buildup halfway on spinous processes but easily discernible. Transverse processes cannot be felt.	Tailhead prominent but individual vertebrae cannot be visually identified. Hook bones appear rounded but are still easily discernible. Pin bones not distinguishable	Slight fat cover over ribs. Ribs easily discernible.	Shoulder accentuated.
4 MODERATELY THIN	Neck not obviously thin.	Withers not obviously thin.	Negative crease along back.	Prominence depends on conformation, fat can be felt. Hook bones not discernible.	Faint outline discernible.	Shoulder not obviously thin.
5 MODERATE	Neck blends smoothly into body.	Withers rounded over spinous processes.	Back Level	Fat around tailhead beginning to feel spongy.	Ribs cannot be visually distinguished but can be easily felt.	Shoulder blends smoothly into body.
6 MODERATELY FLESHY	Fat beginning to be deposited.	Fat beginning to be deposited.	May have slight positive crease down back.	Fat around tailhead feels soft.	Fat over ribs feels spongy.	Fat beginning to be deposited.
7 FLESHY	Fat deposited along neck.	Fat deposited along withers.	May have positive crease down back.	Fat around tailhead is soft.	Individual ribs can be felt, but noticeable filling between ribs with fat.	Fat deposited behind shoulder
8 FAT	Noticeable thickening of neck.	Area along withers filled with fat.	Positive crease down back.	Tailhead fat very soft.	Difficult to feel ribs.	Area behind shoulder filled in flush with body.
9 EXTREMELY FAT	Bulging Fat.	Bulging fat.	Obvious positive crease down back.	Building fat around tailhead.	Paunchy fat appearing over ribs.	Bulging fat.

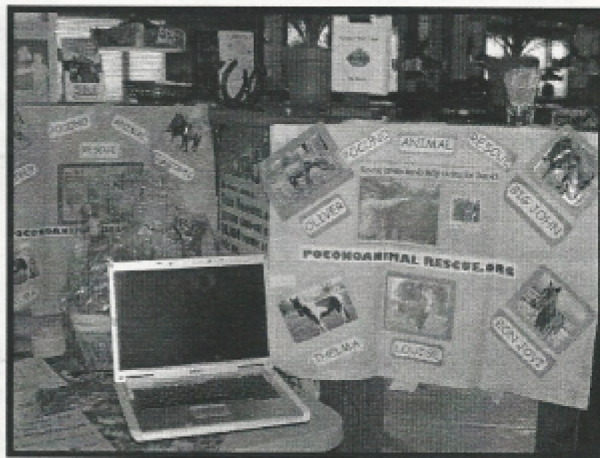
As mentioned the table provides information that can be used to grade a horses condition.



2010 FUNDRAISERS

- March 27 - Broadway to the Rescue at the Pocono Community Theater in East Stroudsburg
- June 3 - Wine tasting at Cherry Valley, a joint fundraiser with Monroe Animal League
- September - Spaghetti dinner at the Chestnuthill Community Center also with the Monroe Animal League
- Two Texas Roadhouse fundraisers
- Pocono Community Days booth, Pocono Township, Tannersville
- Sales of "smash lights", bookmarks and mugs

Look for more fundraising efforts in 2011 advertised on the PAR web site



PAR MISSION STATEMENT

The Mission of the Pocono Animal Rescue is:

1. To promote the humane treatment of large domestic animals by offering assistance, information and educational programs.
2. To rescue and rehabilitate large domestic animals suffering from abuse and neglect.

PAR's WISH LIST

Gift cards/gift certificates to local feed stores: Canfields, Ace Hardware,
Mountain Road Feed, Tractor Supply

Gift certificates for farrier work: Boyd Gannon

Gift certificates for dental work: Brian Shaw

Gift certificates for immunizations (spring and fall) and medical care:

Cross River Veterinary Service .

Monetary donations to train two new cruelty officers. (Right now there is only 1 for 3 counties) \$3,000 needed.

Volunteers needed who are experienced in barn chores, horse care. Must have transportation.

Filing cabinet, computer paper, postage stamps

Fundraising ideas, volunteers, facilities

Where does the money go?

There is no paid staff in our organization. All members are volunteers who donate their time and experience, their homes, farms, vehicles and gasoline, etc.

Hay and horse feed

Dietary supplements

Veterinary, farrier and dental care

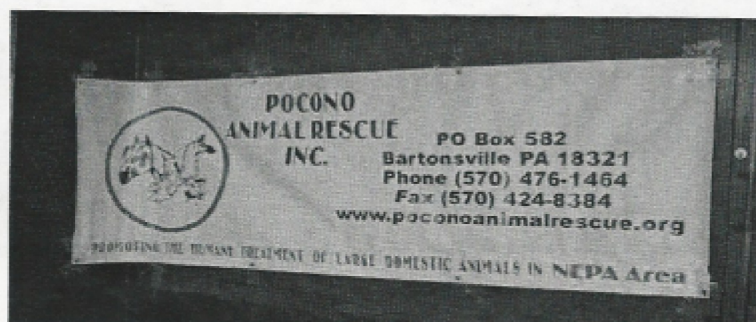
Horse training and rehabilitation

Trailer transportation

Office expenses such as telephone, liability insurance, office supplies

Certification and continuing education of Cruelty Officers

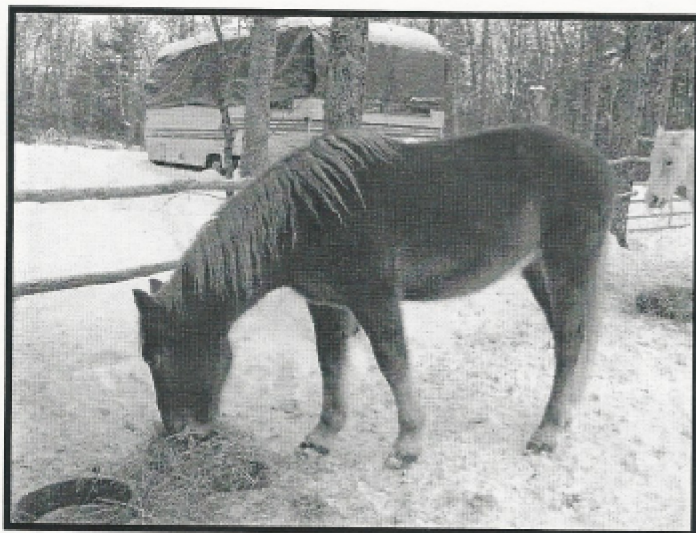
Printing of brochures and newsletters



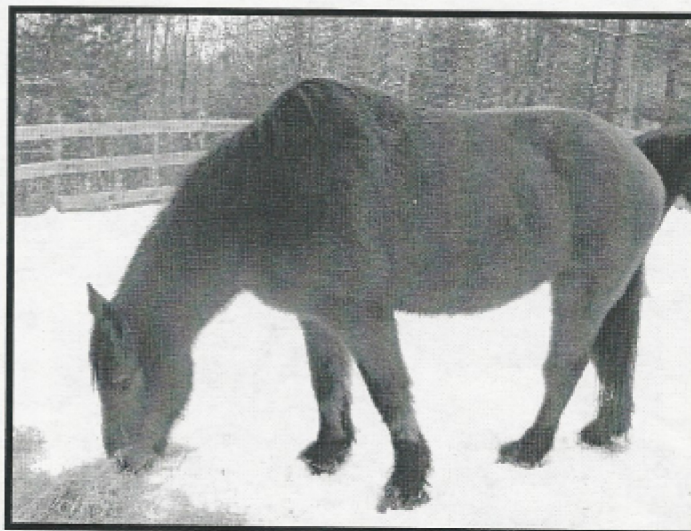
colors. The family Oliver adopts will be fortunate to have such a wonderful personality in their lives. I know Oliver won't forget his friend Dodger. I smile to think that there could be a home out there where Dodger could share his hay with Oliver for the rest of his life.

1-8-11

Since the previous story was written, Oliver went into training and then was adopted. Evidently this was not a good match because Oliver is back. Dodger has remained here at the same foster home for over two years and is still a delight. His hind feet are the same but not any worse. It turns out Dodger is a good babysitter! Two other rescue horses have shared his paddock since Oliver left and he got along with both of them! If you have horses and have room for this wonderful older gentleman, I'm sure he will fit in and you will never regret your decision.



Oliver



Dodger

CRUSIN' TO A NEW LIFE

This is a story about a rescue horse named Cruiser. He came off the truck at Pocono Animal Rescue on October 25, 2010. He had been left in a field with 2 other horses for 9 years. Cruiser's pasture mates were adopted, but he was not. He was being fed, but had had no healthcare and no human contact.

Cruiser is a registered American Quarter Horse, 17 years old. He is a beautiful chestnut with a white blaze face and a gorgeous red mane and tail. He is very handsome and carries himself with pride. His mane is nearly 12 inches long and his tail was so long that I had to trim it by 4 inches so that he did not inadvertently step on it and hurt himself.

Cruiser was frightened and lonely. He had problems with his feet and balance. He was afraid to be handled or groomed. His kind expression and beautiful eyes stole my heart in just a moment. PAR provided dental care, hoof care, vaccinations. Because he had not been handled for such a long period, he was very upset during his session with our farrier.

Now, 6 weeks later, Cruiser comes to me in the turnout, likes his grooming sessions and has settled into the barn routine quite well. Part of his initial problem was due to the fact that he requires special equine feed which I am providing, with the guidance of my barn owner and my veterinarian.

I adopted Cruiser in December, 2010. What a wonderful Christmas present! We are working together in a natural horsemanship program and I am looking forward to being able to ride him in the spring. I am the proud parent of a loving and wonderful rescued horse.



Cruiser

These cows have found new homes



Little Girl



Little Girl



Steers



Bubba



Bull



Cow

Wally, Chance, Oliver & Dodger Need Homes



Wally



Chance



Oliver



Dodger